

GRADE 2 MEDIUM DUTY LEVER LOCKSET

Individual coil compression springs to provide great strength and durability

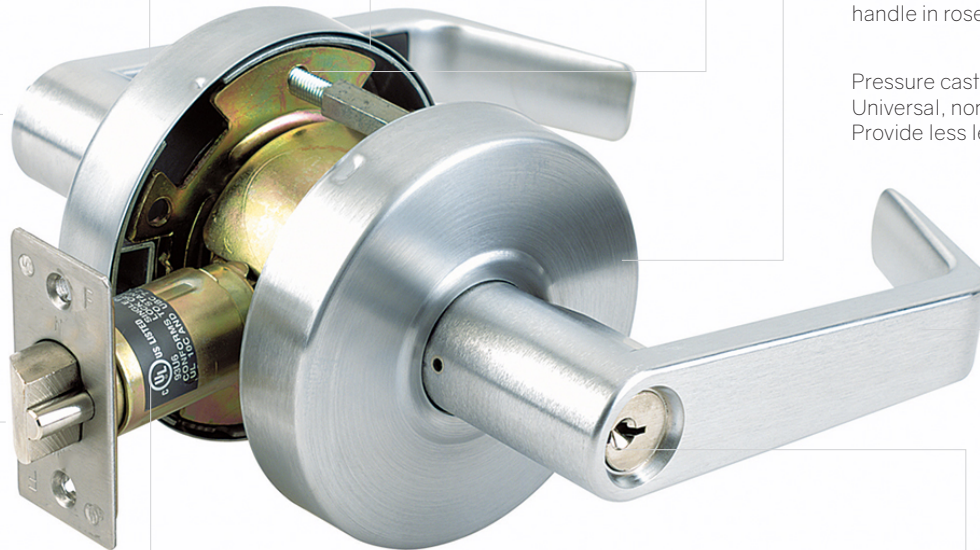
Meet ANSI hollow metal and wooden door cutout 1-3/8" (35MM) -1-3/4"(45mm) door thickness

Removable true through-bolting (Convertible thru-bolt) for wooden and steel door

Universal Turn Button or Push In & Turn Button

Wrought brass or bronze rose The anti-sagging mechanism of handle in rose

Pressure cast solid zinc handle Universal, non-handed Provide less lever wobble and droop



Solid brass 1/2" (12.7mm) throw deadlatch & spring latch Reversible latch for flat & beveled door

UL Label UL 3 Hour fire rated

Precision solid brass pin tumbler cylinders with brass keys Schlage "C" keyway, Weiser & SFIC available



ADA compliant



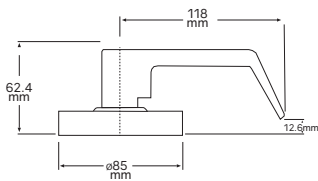
SPECIFICATIONS

- **Certifications:**
 - NSI/BHMA A156.2 Series 4000, Grade 2 strength, operational and 400,000 cycles requirements
 - UL/cUL Listed
 - UL 10C 3 hours fire rating
 - ADA compliant
- **Door Thickness:** 1-3/8" (35mm) to 1-3/4" (45mm)
- **Backset:** 2-3/4" (70mm) standard, 2-3/8" (60mm) optional, 3-3/4" (95mm) and 5" (127mm) available
- **Latch Front:** 1-1/8" (29mm) x 2-1/4" (57mm) standard, 1" (25mm) x 2-1/4" (57mm) optional, square or round corner, beveled, drive-in latch available
- **Latch Bolt:** Solid Brass 1/2" (12.7mm) throw
- **Strike:** ANSI (ASA) curved lip strike standard.
- **Cylinder & Keys:** Precision solid brass pin tumbler cylinders with nickel silver brass 2 keys. Schlage "C" keyway, Weiser and SFIC available
- Small Format Interchangeable Core available
- **Limited Warranty:** five-year Mechanical
- **Flexibility:**
 - Removable convertible post
 - Free wheeling mechanism
 - Various lever and rose designs
 - Large selection of functions and finishes available

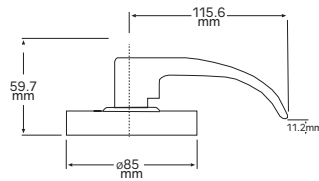
TECHNICAL DIMENSIONS

Lever Designs:

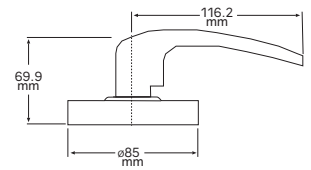
Lever (L)



Lever (R)

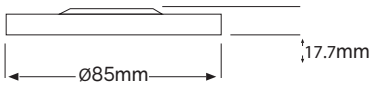


Lever (S)

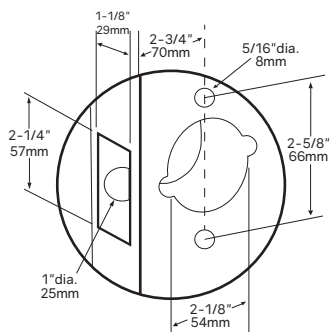


Rose Design:

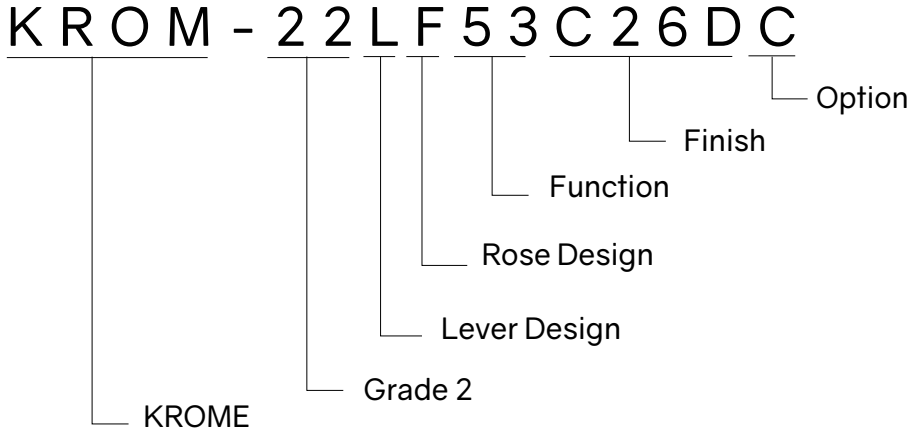
Flat Rose (F)



Door Preperation:



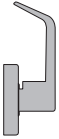
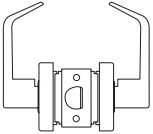
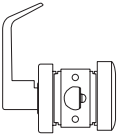
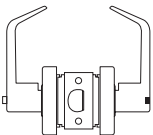
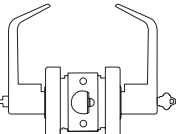
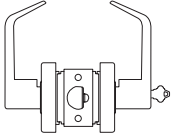
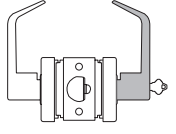
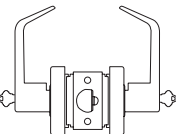
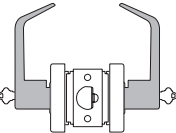
HOW TO ORDER



Item Number	Lever Design	Rose	Function	Finish	Option
22	L Shape (L) Round (R) Short (S)	Flat (F)	Dummy (00) Passage (10) Exit (15) Privacy (40) Entry (53) Classroom (70) Classroom Double (72) Storeroom (80) Storeroom Double (82)	Stain Chrome (C26D) Bright Brass (C3)	Weiser Keyway (WR) Schlage Keyway (Blank) Clutch (C) Small Format Interchangeable Core (SFIC)
22	L Shape (L) Short (S)		Dummy (00) Passage (10) Privacy (40) Entry (53) Classroom (70) Storeroom (80)	Black (C19)	Schlage Keyway (Blank)

Note: default Schlage keyway

FUNCTIONS

Outside	Inside	Type	ANSI	Function Description
		Dummy (00)	-	<ul style="list-style-type: none"> Lever acts as pull only; no operation
		Passage (10)	HF 75	<ul style="list-style-type: none"> Latchbolt by lever either side Both levers always free
		Exit or Twin Communicating (15)	HF 89A	<ul style="list-style-type: none"> Guard bolt deadlocks latch bolt Blank plate outside Latch bolt by lever inside Minimum clearance of 1" required between doors
		Privacy Bedroom or Bathroom (40)	HF 76	<ul style="list-style-type: none"> Latchbolt by lever either side, except when push button locks outside lever. (Lever handle is free-wheeling in locked position.) Outside lever locked by push button Outside lever unlocked by emergency release tools by rotating inside lever or by closing door
		Entrance or Office (53)	HF 81	<ul style="list-style-type: none"> Deadlocking latchbolt by either side except when turn button locks outside lever (Lever handle is free wheeling in locked position) Pushing turn button locks outside lever, requiring use of key outside to unlock Turning inside lever unlocks outside lever Pushing in and turning button locks outside lever, requiring key at all times. Turning inside lever does not unlock outside lever until button is manually turned to unlocked position
		Classroom (70)	HF 84	<ul style="list-style-type: none"> Deadlocking latchbolt by lever either side except when key outside locks outside lever (Lever handle is free-wheeling in locked position.) Outside lever unlocked by key outside Inside lever always free
		Storeroom (80)	HF 86	<ul style="list-style-type: none"> Deadlocking latchbolt by key in outside lever or by rotating inside lever (Lever handle is free-wheeling in locked position.) Outside lever always locked Inside lever always free
		Communicating Double Classroom (72)	HF 88	<ul style="list-style-type: none"> Key in either lever locks or unlocks its own lever independently
		Communicating Double Storeroom (82)	HF 87	<ul style="list-style-type: none"> Bothside lever rigid Bothside lever operated by key only