

Φ.375Hole
(8 places)

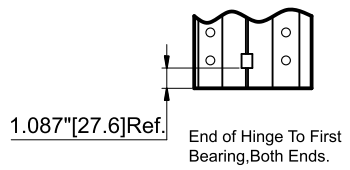
Φ.234Hole
(38 places)

32 bearings
spaced evenly
@2.582"
center to center

Unless noted all dimensions $\pm 0.020"$
 $\pm 0.5mm$

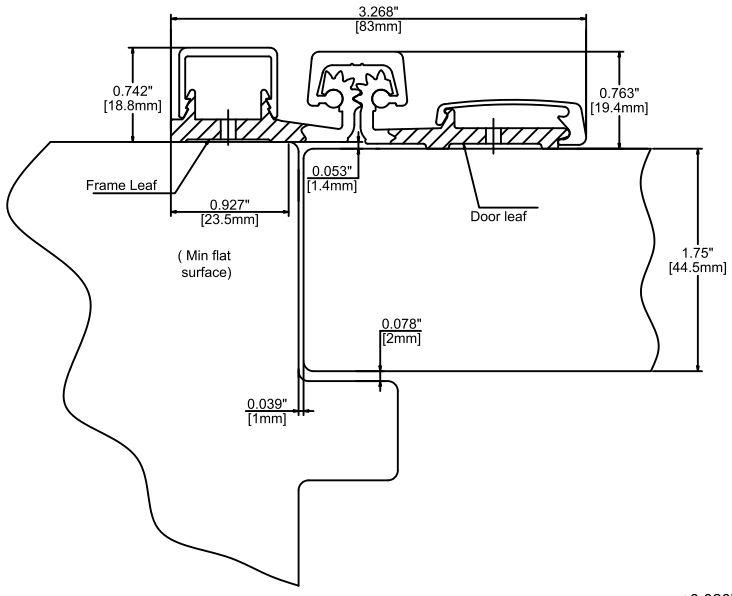
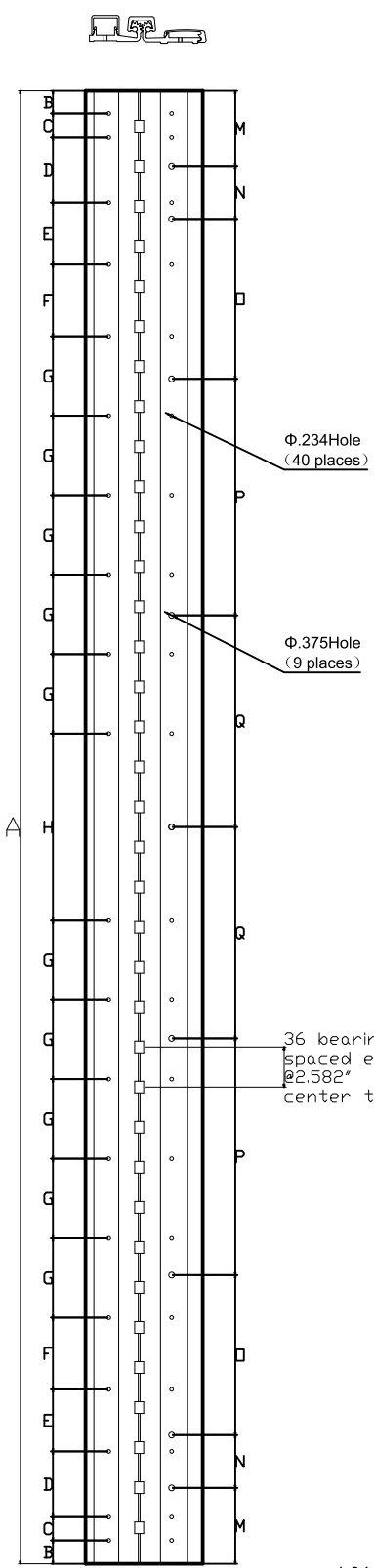
Vertical Hole Spacing

	Metric(mm)	Decimal(in)
A	2108.0 ^{+0.00} _{-0.80}	82.992 ⁺⁰ _{-0.03}
B	38.5±0.25	1.516±0.020
C	108.0±0.20	4.252±0.008
D	101.5±0.20	3.996±0.008
E	117.5±0.20	4.626±0.008
F	130.2±0.20	5.126±0.008
M	123.7±0.25	4.87±0.010
N	85.7±0.20	3.374±0.008
O	263.5±0.20	10.374±0.008
P	387.4±0.20	15.252±0.008



KROME

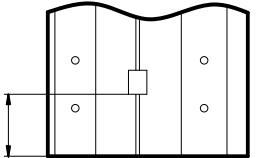
ITEM NO:	DESCRIPTION:		SCALE:
HFS201	FULL CONCEALED MORTISE 83" HEAVY DUTY CONTINUOUS GEARED HINGE		NOT TO SCALE
ANSI:	UNIT:	VERSION:	DATE:
	inches[mm]	20183-1	04/02/24



Unless noted all dimensions $\pm 0.020"$
 $\pm 0.5mm$

Vertical Hole Spacing

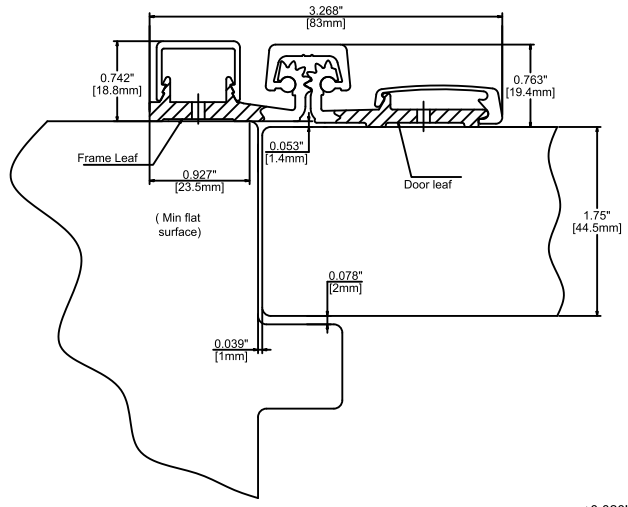
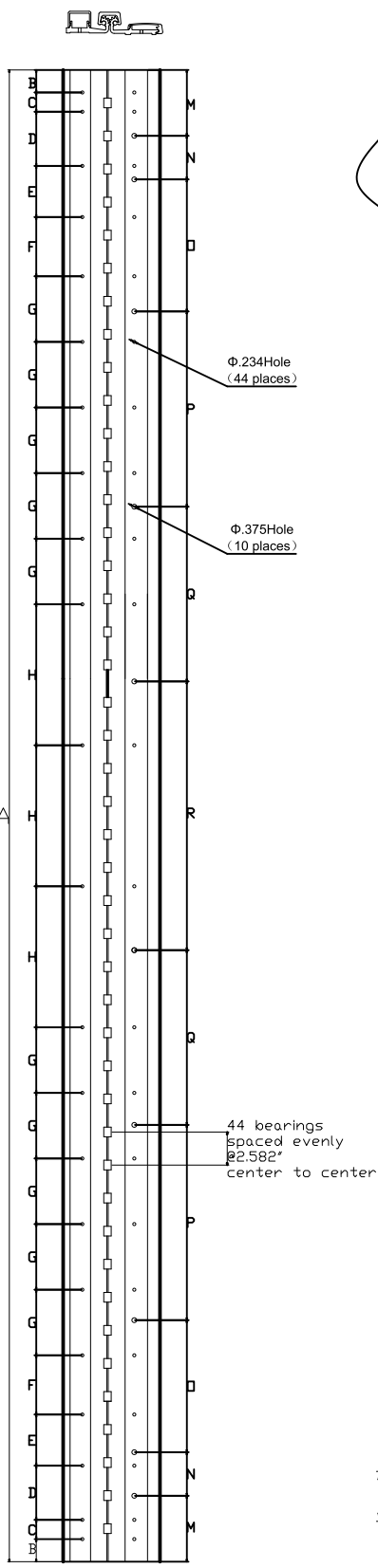
	Metric(mm)	Decimal(in)
A	2414.0 ^{+0.00} _{-0.80}	95.039 ⁺⁰ _{-0.03}
B	39.0±0.50	1.535±0.020
C	38.1±0.20	1.5±0.008
D	108.0±0.20	4.25±0.008
E	101.5±0.20	3.996±0.008
F	117.5±0.20	4.626±0.008
G	130.2±0.20	5.126±0.008
H	304.6±0.20	11.992±0.008
M	124.3±0.25	4.894±0.010
N	85.7±0.20	3.374±0.008
O	263.6±0.20	10.374±0.008
P	387.3±0.20	15.252±0.008
Q	346.1±0.20	13.626±0.008



End of Hinge To First Bearing, Both Ends.

1.944"[49.4]Ref.

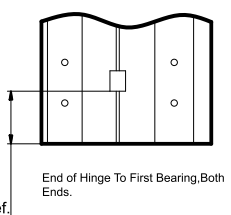
<h1>KROME</h1>	ITEM NO:	DESCRIPTION:	SCALE:
	HFS201	FULL CONCEALED MORTISE 95° HEAVY DUTY CONTINUOUS GEARED HINGE	NOT TO SCALE
	ANSI:	UNIT:	VERSION:
	inches[mm]	20195-1	04/02/24



Unless noted all dimensions $\pm 0.020"$
 $\pm 0.5mm$

Vertical Hole Spacing

	Metric(mm)	Decimal(in)
A	3048.0 ^{+0.00} _{-0.80}	120 ⁺⁰ _{-0.03}
B	51.3±0.5	2.02±0.020
C	38.0±0.20	1.496±0.008
D	108.0±0.20	4.252±0.008
E	101.6±0.20	4.000±0.008
F	117.4±0.20	4.622±0.008
G	130.2±0.20	5.126±0.008
H	304.8±0.20	12.000±0.008
M	136.5±0.25	5.374±0.010
N	85.8±0.20	3.378±0.008
O	263.5±0.20	10.374±0.008
P	387.3±0.20	15.248±0.008
Q	346.1±0.25	13.626±0.008



KROME

ITEM NO:	DESCRIPTION:		SCALE:
HFS201	FULL CONCEALED MORTISE 120° HEAVY DUTY CONTINUOUS GEARED HINGE		NOT TO SCALE
ANSI:	UNIT:	VERSION:	DATE:
	inches[mm]	201120-1	04/02/24